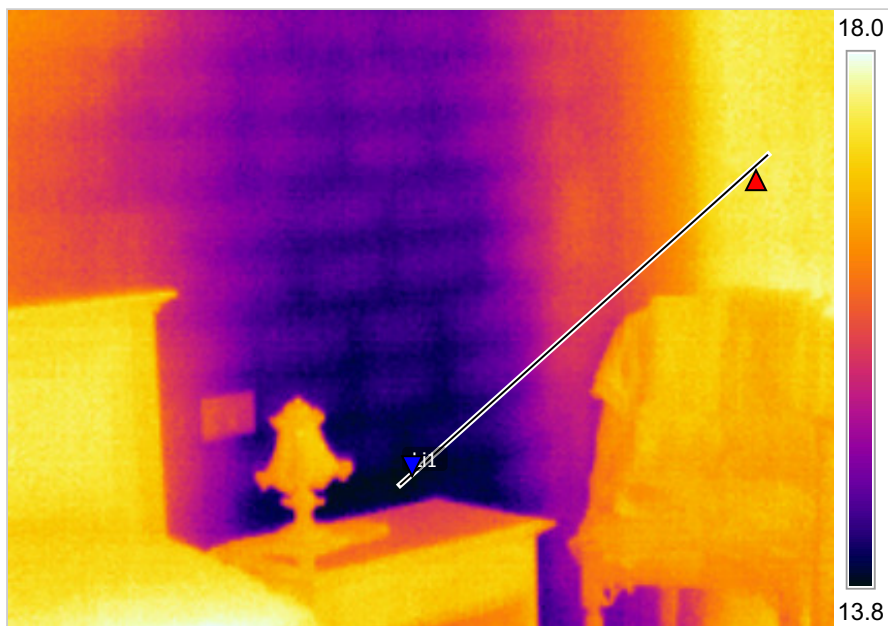


Measurements		°C
Li1	Max	17.3
	Min	13.8
	Average	15.5
RH 1		53.3 %
AirT 1		19 °C
Parameters		
Emissivity		0.93
Ref. temp.		19 °C

22/01/2013 09:35:28

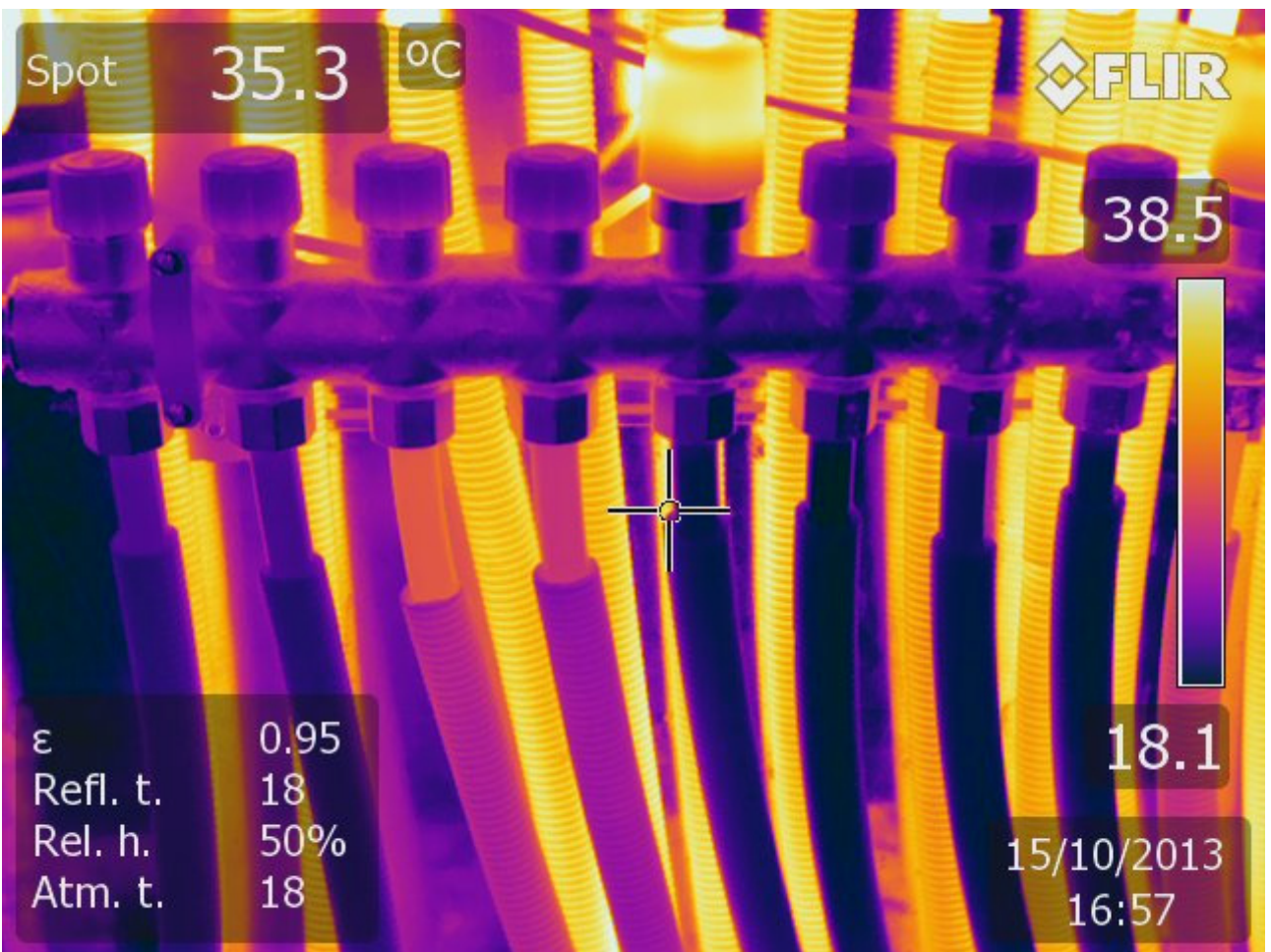


IR\_1689.jpg

22/01/2013 09:35:28

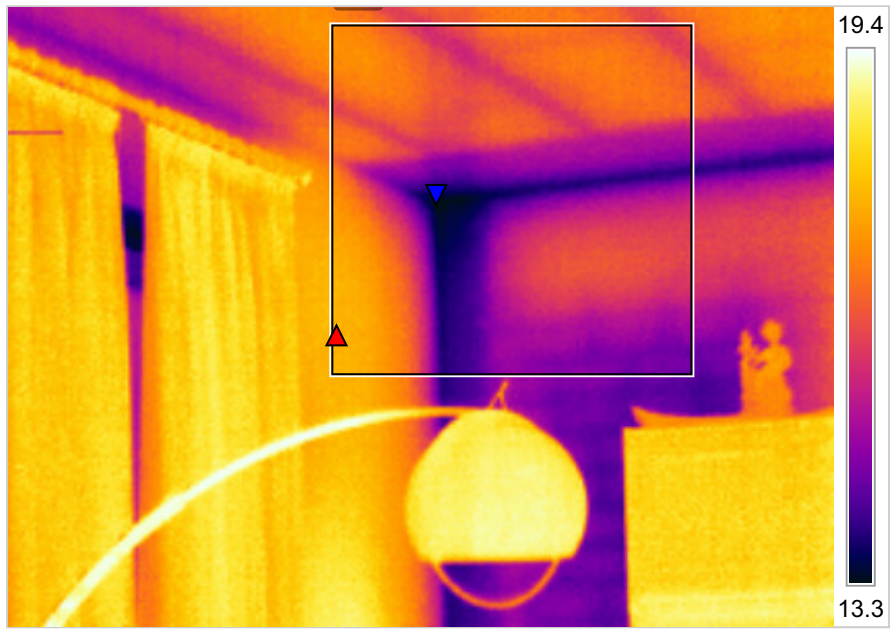


DC\_1690.jpg



Measurements		°C
Ar1	Max	18.2
	Min	13.2
	Average	16.5
RH 1	48 %	
AirT 1	20.8 °C	
Parameters		
Emissivity	0.93	
Ref. temp.	21 °C	

22/01/2013 10:08:06



IR\_1775.jpg

22/01/2013 10:08:06



DC\_1776.jpg

